



PROFESSIONAL EXAMINATION BOARD

Middle School Teacher Eligibility Test – 2018 24th Feb 2019 09:30 AM

Topic:- Child Development & Pedagogy (CDP)

1) Claustrophobia is a fear of enclosed places. It is an example of : / क्लौस्ट्रोफोबिया संलग्न स्थानों का एक डर है। इसका एक उदाहरण है:

1. Global Developmental delay / वैश्विक विकास में देरी
2. Obsessive-Compulsive Disorder/ जुनूनी-बाध्यकारी विकार
3. Anxiety disorder / तनाव विकार
4. Autism / ऑटिज्म

Correct Answer :-

- Anxiety disorder / तनाव विकार

2) In "heuristics," the child is free to go for any kind of possible rules or ideas to reach the solution. This rule is called as:/ "स्वानुभाविक शोध प्रणाली" में, बच्चे समाधान तक पहुंचने के लिये किसी भी प्रकार के सम्भावित नियम अथवा विचार की सहायता ले सकते हैं, इस नियम को क्या कहा जाता है?

1. rule of thumb/ अनुभवसिद्ध नियम (रूल ऑफ थम्ब)
2. differentiated rule/ विभेदित नियम
3. mimicking rule/ अनुकरण नियम
4. cognitive rule/ संज्ञानात्मक नियम

Correct Answer :-

- rule of thumb/ अनुभवसिद्ध नियम (रूल ऑफ थम्ब)

3) Which is not the step of scientific method? /

निम्नलिखित में से कौन-सा वैज्ञानिक प्रणाली का चरण नहीं है?

1. Experiment / प्रयोग
2. Interview / साक्षात्कार
3. Prediction / पूर्वानुमान
4. Observation / अवलोकन

Correct Answer :-

- Interview / साक्षात्कार

4) According Jean Piaget, children develop abstract logic and reasoning skill during _____. /

जीन पियाजे के अनुसार, ____ के दौरान बच्चों में अमूर्त तर्क और तर्क कौशल विकसित होते हैं।

1. Concrete operational stage / मूर्त संक्रियात्मक अवस्था
2. Formal operational stage / औपचारिक संक्रियात्मक अवस्था
3. Preoperational stage / पूर्व-संक्रियात्मक अवस्था
4. Sensorimotor stage / संवेदी प्रेरक)सेंसरीमोटर(अवस्था

Correct Answer :-

- Formal operational stage / औपचारिक संक्रियात्मक अवस्था

5) A self - directed learning process is arguably the most powerful model for facilitating and inspiring individual, group and organizational learning and development. It means learners ___ /

एक स्व-निर्देशित अधिगम प्रक्रिया, व्यक्तिगत, सामूहिक और संगठनात्मक अधिगम और विकास की सुविधा हेतु निःसंदेह सबसे शक्तिशाली मॉडल है। इसका मतलब है कि अधिगमकर्ता ___।

1. take responsibility for learning and become goal oriented / अधिगम की जिम्मेदारी लेता है और लक्ष्योन्मुखी बनता है।
2. compete with others / दूसरों के साथ प्रतिस्पर्धा करता है।
3. achieve the best scores / अच्छा परिणाम प्राप्त करता है।
4. enjoy learning / अधिगम का आनंद ले रहा है।

Correct Answer :-

- take responsibility for learning and become goal oriented / अधिगम की जिम्मेदारी लेता है और लक्ष्योन्मुखी बनता है।

6) In which stage of psychosocial development does the child feel shame and doubt? / मनोवैज्ञानिक विकास के किस चरण में बच्चे को शर्म और संदेह महसूस होता है?

1. Preschool / प्रीस्कूल
2. Adolescent / किशोरावस्था
3. School age / स्कूल आयु
4. Early childhood / शुरूआती बाल्यकाल

Correct Answer :-

- Preschool / प्रीस्कूल

7) Proper sex education should be rendered at _____ stage. / उचित यौन शिक्षा _____ अवस्था पर प्रदान की जानी चाहिए।

1. Childhood / बाल्यकाल
2. Adolescence / किशोरावस्था
3. Adulthood / वयस्क
4. Early childhood / प्रारंभिक बाल्यकाल

Correct Answer :-

- Adolescence / किशोरावस्था

8) The 'Hypothesis of Critical period' was proposed by _____. / 'महत्वपूर्ण अवधि की परिकल्पना' _____ के द्वारा प्रस्तावित की गई थी

1. Helen Keller / हेलेन केल्लर
2. Noam Chomsky/ नॉम चॉम्स्की
3. Bloomfield/ ब्लूमफील्ड्स
4. Eric Lenneberg/ एरिक लेनबर्ग

Correct Answer :-

- Eric Lenneberg/ एरिक लेनबर्ग

9) Who is credited with the concept of Intelligence Quotient (IQ)? / बुद्धि लब्धि (IQ) की अवधारणा का श्रेय किसे दिया जाता है?

1. Theodore Simon / थियोडोर साइमन
2. Spearman / स्पीयरमैन

3. Alfred Binet / अल्फ्रेड बिने
4. William Stern / विलियम स्टर्न

Correct Answer :-

- William Stern / विलियम स्टर्न

10) According to Piaget, intellectual growth occurs through adaptation to the world. This happens through: / पियाजे के अनुसार, बौद्धिक विकास दुनिया के अनुकूलन के माध्यम से होता है। यह किसके माध्यम से होता है?

1. Absorption and Accommodation / अवशोषण और समंजन (एकोमेडेशन)
2. Acquisition and Autocorrelation / संप्राप्ति और स्वतः सहसंबंध
3. Assimilation and Accommodation / आत्मसात्करण और समंजन (एकोमेडेशन)
4. Assimilation and Acclimatisation / आत्मसात्करण और पर्यनुकूलन

Correct Answer :-

- Assimilation and Accommodation / आत्मसात्करण और समंजन (एकोमेडेशन)

11) According to Albert Bandura, the process that is involved in acquisition, organization and use of information is called _____ process. / अल्बर्ट बंडुरा के अनुसार, वह प्रक्रिया जो सूचना के अधिग्रहण, संगठन और उपयोग में शामिल होती है, उसे _____ प्रक्रिया कहा जाता है।

1. Cognitive / संज्ञानात्मक
2. Affective / प्रभावी
3. Self regulation/ स्व नियमन
4. Motivation/ प्रेरणा

Correct Answer :-

- Self regulation/ स्व नियमन

12) What concept of conservation focuses on the amount of a substance that exists? / संरक्षण का कौन सा सिद्धांत किसी मौजूदा पदार्थ की मात्रा पर केंद्रित है?

1. Weight / वजन
2. Area / क्षेत्रफल
3. Mass / द्रव्यमान
4. Length / लंबाई

Correct Answer :-

- Mass / द्रव्यमान

13) What cognitive ability are children displaying when they attribute human-like qualities to objects? / बच्चे कौन-सी संज्ञानात्मक क्षमता दर्शा रहे हैं जब वे वस्तुओं को मानव गुणों से संबंधित करते हैं?

1. Egocentrism / अहंभाव (इगोसेन्ट्रिज्म)
2. Conservation / संरक्षण
3. Animism / जीववाद
4. Object permanence/ वस्तु स्थायित्व

Correct Answer :-

- Animism / जीववाद

14) Some children experience excessive anxiety at being away from home, even after a long period of time. What might they be suffering from? / कुछ बच्चे लंबे समय तक घर से दूर रहने के बाद भी, घर से दूर होने पर अत्यधिक चिंता का अनुभव करते हैं। वे किस से पीड़ित हो सकते हैं?

1. School phobia / स्कूल फोबिया
2. Social anxiety / सामाजिक चिंता
3. Conduct disorder / आचरण विकार
4. Separation anxiety / अलगाव की चिंता

Correct Answer :-

- Separation anxiety / अलगाव की चिंता

15) An example of self-report measures of personality is/ व्यक्तित्व के आत्म-रिपोर्ट उपायों का एक उदाहरण है:

1. MMPI / एमएमपीआई
2. Sentence Completion Test / वाक्य पूर्ण परीक्षण
3. Rorschach Test / रोर्साक परीक्षण
4. TAT / टीएटी

Correct Answer :-

- MMPI / एमएमपीआई

16) Intense mood swing is a characteristic of / तीव्र मूड स्विंग निम्न का लक्षण है:

1. Learning disorder / अधिगम अक्षमता
2. Bi-polar disorder / द्विध्रुवी विकार
3. Conduct disorder / आचरणगत विकार
4. Anti-social personality / असामाजिक व्यक्तित्व

Correct Answer :-

- Bi-polar disorder / द्विध्रुवी विकार

17) Which of the following best describes Maturation of a learner? / निम्नलिखित में से क्या एक शिक्षार्थी की परिपक्वता का सबसे अच्छा वर्णन करता है?

1. It is a continuous process of individual development/ यह व्यक्तिगत विकास की एक सतत प्रक्रिया है।
2. It is related with cognitive capabilities/ यह संज्ञानात्मक क्षमताओं से संबंधित है।
3. Specific environment is required/ विशिष्ट वातावरण की आवश्यकता होती है।
4. It takes place at specific age/ यह विशिष्ट आयु में होता है।

Correct Answer :-

- It is a continuous process of individual development/ यह व्यक्तिगत विकास की एक सतत प्रक्रिया है।

18) Which type of memory takes special account of context? / किस प्रकार की स्मृति संदर्भ का विशेष ध्यान रखती है?

1. Iconic memory / प्रतिष्ठित स्मृति
2. Echoic memory / प्रतिध्वनि स्मृति
3. Episodic memory / प्रासंगिक स्मृति
4. Sensory memory / संवेदी स्मृति

Correct Answer :-

- Episodic memory / प्रासंगिक स्मृति

19) Students who disturb others in a classroom are likely to have _____ type of learning style./ जो छात्र कक्षा में दूसरों को परेशान करते हैं उनके पास _____ प्रकार की सीखने की शैली होने की संभावना होती है।

1. Kinesthetic/ गतिसंवेदी (काइनेस्थेटिक)
2. Tactile/ स्पर्शनीय (टैक्टाइल)

3. Auditory/ श्रवण

4. Visual / दृश्य

Correct Answer :-

- Kinesthetic/ गतिसंवेदी (काइनेस्थेटिक)

20) Who carried out an experiment on memory involving nonsense syllables? / किसने स्मृति पर एक प्रयोग किया, जिसमें बकवास शब्दांश शामिल थे?

1. Ebbinghaus / एब्बिनघास

2. Atkinson / एटकिंसन

3. Posner / पोसनर

4. Calkins / कालकिंस

Correct Answer :-

- Ebbinghaus / एब्बिनघास

21) Who proposed the concept of zone of proximal development? / निकटस्थ विकास के क्षेत्र की अवधारणा का प्रस्ताव किसने रखा?

1. Abraham Maslow / अब्राहम मास्लो

2. Lev Vygotsky / लेव वाइगोत्सकी

3. Carl Rogers / कार्ल रोजर्स

4. Albert Bandura / अल्बर्ट बॅण्डुरा

Correct Answer :-

- Lev Vygotsky / लेव वाइगोत्सकी

22) The spinal cord develops earlier to the heart. This is because of the operation of the following tendency. / रीढ़ की हड्डी हृदय से पूर्व विकसित होती है। यह निम्न प्रवृत्ति के संचालन के कारण होता है:

1. General to specific / सामान्य से विशिष्ट तक

2. Cephalocaudal / सिफैलोकाउडल

3. Proximodistal / प्रोक्सिमोडिस्टल

4. Part to whole / भाग से संपूर्ण तक (पार्ट टू होल)

Correct Answer :-

- Proximodistal / प्रोक्सीमॉडिस्टल

23) The following is an example of a secondary reinforcer. / निम्नलिखित द्वितीयक पुनर्बलन का एक उदाहरण है।

1. Ice cream / आइसक्रीम
2. Dress / पोशाक
3. Money / धन
4. Juice / रस

Correct Answer :-

- Money / धन

24) Maladjusted children are generally seen in / सामान्यतः कुसमायोजित बच्चे यहाँ देखे जाते हैं:

1. Broken family / बिखरे परिवार में
2. Rural areas / ग्रामीण क्षेत्रों में
3. None of these / इनमें से कोई नहीं
4. Poor family / गरीब परिवार में

Correct Answer :-

- Broken family / बिखरे परिवार में

25) One learns to use one's muscles and acquires a skill due to: /

एक व्यक्ति, मांसपेशियों का उपयोग करना सीखता है और इसके कारण एक कौशल प्राप्त करता है:

1. Maturation /
परिपक्वता
2. Exercise /
अभ्यास
3. Learning /
अधिगम
4. Parents' force /
अभिभावकों का जोर

Correct Answer :-

- Maturation /

परिपक्वता

26) During the first half of the 20th Century, _____ students, those identified as having special needs, received few or no special services in the schools. 20 / वीं शताब्दी के पहले छमाही के दौरान, _____ छात्रों, जिनकी पहचान विशेष आवश्यकता रखने वालों के रूप में की गई थी, उन्हें स्कूलों में कुछ या कोई विशेष सेवा नहीं मिली थी।

1. Above average / औसत से अधिक
2. Exceptional / असाधारण
3. Mentally retarded / मानसिक रूप से मंद
4. Poor / गरीब

Correct Answer :-

- Exceptional / असाधारण

27) **CANCELLED**

VARK model of student learning was proposed by: / छात्र अधिगम का वार्क मॉडल इनके द्वारा प्रस्तावित किया गया था:

1. Kohlberg / कोह्लबर्ग
2. Neil Fleming / नील फ्लेमिंग
3. Piaget / पियाजे
4. E. Erikson / ई. इरिकसन

Correct Answer :-

- Neil Fleming / नील फ्लेमिंग

28) **CANCELLED**

During the emergence of language, the 'jargon' period is present during / भाषा के उद्गमन के दौरान, "शब्दजाल या जार्गन" अवधि इस दौरान होती है:

1. Nine months to one year / नौ महीने से एक वर्ष
2. Birth to three months / जन्म से तीन महीने
3. Three to six months / तीन से छः महीने

4. Six to nine months / छः से नौ महीने

Correct Answer :-

• Six to nine months / छः से नौ महीने

29) Which of the following is the best way for parents to support and help children cope with failure? / निम्नलिखित में से कौन-सा माता-पिता द्वारा बच्चों को असफलता से निपटने में समर्थन देने और उनकी मदद करने का सबसे अच्छा तरीका है?

1. Create a comforting environment for the child to engage in another activity to forget their failure / उनकी असफलता को भूलाने के लिए बच्चे को किसी अन्य गतिविधि में व्यस्त करने हेतु एक आरामदायक परिवेश का निर्माण करना।
2. Listen, empathize, then focus on opportunities to learn, not abilities / सुनना, सहानुभूति रखना, फिर सीखने के अवसरों पर ध्यान केंद्रित करना, न कि क्षमताओं पर।
3. Create an environment for our kids that shelters them from potential failure or disappointment / अपने बच्चों के लिए ऐसे परिवेश का निर्माण करे जो उन्हें संभावित असफलता या निराशा से बचाये।
4. Push kids beyond their capabilities / बच्चों को उनकी क्षमताओं से परे धकेलना या पुश करना।

Correct Answer :-

• Listen, empathize, then focus on opportunities to learn, not abilities / सुनना, सहानुभूति रखना, फिर सीखने के अवसरों पर ध्यान केंद्रित करना, न कि क्षमताओं पर।

30) Inquiry approach method develops the ability of learners for / पूछताछ दृष्टिकोण विधि से शिक्षार्थियों की निम्न के लिए क्षमता का विकास होता है:

1. Using the experience of a teacher / एक शिक्षक के अनुभव का उपयोग करना।
2. Assimilating more information in less time / कम समय में अधिक जानकारी को आत्मसात करना।
3. Experimentation / प्रयोग
4. Maximizing verbal learning / मौखिक अधिगम को उच्चतम सीमा तक बढ़ाना

Correct Answer :-

• Experimentation / प्रयोग

Topic:- General Sanskrit(L1GS)

1)

पौषमार्गशिरसौ कस्याम् ऋतौ विद्यते ?

1. वसन्ते ।
2. हेमन्ते ।
3. ग्रीष्मे ।
4. वर्षे ।

Correct Answer :-

1. हेमन्ते ।

2) स्पृहयतेः प्रयोगे का विभक्तिः प्रयुज्यते ?

1. तृतीया ।
2. चतुर्थी ।
3. पञ्चमी ।
4. सप्तमी ।

Correct Answer :-

1. चतुर्थी ।

3) अस्माकं शब्दस्य मूलरूपं किम् ?

1. तद ।

2. युश्मद् ।

3. यद् ।

4. अस्मद् ।

Correct Answer :-

• अस्मद् ।

4) स्वराः कति ?

1. षोडश ।

2. दश ।

3. त्रयोदश ।

4. नव ।

Correct Answer :-

• त्रयोदश ।

5) २.४५ इति घण्टाम् अक्षरैः लिखत ।

1. सपादद्विवादनम् ।

2. पादोनत्रिवादनम् ।

3. पादोनद्विवादनम् ।

4. सपाद त्रिवादनम् ।

Correct Answer :-

पादोनत्रिवादनम् ।

6) एधाम्बभूव इति कस्मिन् पुरुषे अस्ति ?

1. उत्तमे ।

2. प्रथममध्यमे ।

3. मध्यमे ।

4. प्रथमे।

Correct Answer :-

प्रथमे।

7) 'चिराय' इति कीदृशं पदम् ?

1. स्त्रीलिङ्गम् ।

2. अव्ययम् ।

3. पुंलिङ्गम्।

4. नपुंसकम् ।

Correct Answer :-

• अव्ययम् ।

8) पुंलिङ्ग-गृहशब्दः कस्मिन् वचने प्रयुज्यते ?

1. नास्ति ।

2. एक ।

3. बहु ।

4. द्वि ।

Correct Answer :-

• बहु ।

9) दध धातोः क्त्वा प्रत्यये रूपं किम् ?

1. दधित्वा ।

2. दधित्व ।

3. दापयित्वा ।

4. दधत्वा ।

Correct Answer :-

. दधित्वा ।

10) काव्यं कस्मै रोचते ?

1. धनहीनाय ।

2. सहृदयाय ।

3. आमयाय ।

4. वीतरागाय ।

Correct Answer :-

. सहृदयाय ।

11) कथयिष्यति इत्यस्य लुट् लकारे रूपं किम् ?

1. कथयिष्यति ।

2. अकारयिता ।

3. कारयिता ।

4. कथयिता ।

Correct Answer :-

. कथयिता ।

12) ध्यातव्यम् इति पदं पृथक् कुरुत ।

1. ध्या तव्य ।

2. ध्यात तव्य ।

3. ध्यात व्यम् ।

4. ध्यै तव्य ।

Correct Answer :-

. ध्यै तव्य ।

13) भासते स्म इत्यस्य अर्थः कः ?

1. अभासेत ।

2. अभाषत ।

3. अभासत ।

4. अभाषेत ।

Correct Answer :-

. अभासत ।

14) भाग्योदयः इत्यस्य सन्धिः कः ?

1. पररूपः ।

2. पूर्वरूपः ।

3. गुणः ।

4. वृद्धिः ।

Correct Answer :-

• गुणः ।

15) रघोः पुत्रः कः ?

1. वामनः ।

2. वसिष्ठः ।

3. राघवः ।

4. श्यामलः ।

Correct Answer :-

• राघवः ।

16) 'घुर्घुरुः' इत्यस्य वर्णान् पृथक् पृथक् लिखत ।

1. घ् अ उ र घ् अ उ र् उः ।

2. घु र् घु रुः ।

3. घ उ र् घ उ रुः ।

4. घ् उ र् घ् उ र् उः ।

Correct Answer :-

. घ् उ र् घ् उ र् उः ।

17) वर्मणा इति पदस्य प्रादिपदिकं किम् ?

1. वर्म ।

2. वर्मा ।

3. वार्मन् ।

4. वर्मन् ।

Correct Answer :-

. वर्मन् ।

18) स्पर्ध-धातोः मध्यमपुरुषैकवचनं किम् ?

1. स्पर्दते ।

2. स्पर्धामि ।

3. स्पर्धते ।

4. स्पर्धसे ।

Correct Answer :-

• स्पर्धसे ।

19) विभोः भावः कः ?

1. विभवम् ।

2. वैभवम् ।

3. भवम् ।

4. सम्भवम् ।

Correct Answer :-

• वैभवम् ।

20) बाधते इत्यस्य धातुः कः ?

1. बाधृ ।

2. बाधु ।

3. बाद्रु ।

4. बधृ ।

Correct Answer :-

• बाधृ ।

21) पाञ्चाशत् इति शब्दं शोधयत ।

1. पञ्चाशत् ।

2. पञ्चशात्।

3. पाञ्चशत् ।

4. पञ्चशत् ।

Correct Answer :-

• पञ्चाशत् ।

22) एध धातोः भावे रूपं किम् ?

1. अदति ।

2. धाव्यते ।

3. एदधयति ।

4. एध्यते ।

Correct Answer :-

• एध्यते ।

23) पाण्डवाः । अत्र रिक्तस्थानं पूरयत ।

1. गच्छसि ।

2. गच्छावः ।

3. गच्छति ।

4. गच्छन्ति ।

Correct Answer :-

• गच्छन्ति ।

24) पौर्णमास्यां इति कस्यां विभक्तौ वर्तते ?

1. सप्तमी ।

2. षष्ठी ।

3. चतुर्थी ।

4. पञ्चमी ।

Correct Answer :-

• सप्तमी ।

25) 'नेम' शब्दस्य पर्यायः कः ?

1. सम्पूर्णम् ।

2. एकम् ।

3. अर्धम् ।

4. सार्धमेकम् ।

Correct Answer :-

• अर्धम् ।

26) ५६२१ इति संख्यां शब्दैः लिखत ।

1. एकविंशत्युत्तरषट्शतधिकपञ्चसहस्रम् ।

2. एकविंशत्युत्तरताधिकपञ्चसहस्रम् ।

3. एकविंशत्युत्तरषट्शताधिकपञ्चसहस्रम् ।

4. एकविंशत्युत्तरषट्शताधिकसहस्रम् ।

4.

Correct Answer :-

• एकविंशत्युत्तरषट्शताधिकपञ्चसहस्रम् ।

27) उभ शब्दस्य चतुर्थी रूपं किम् ?

1. उभाभ्याम् ।

1.

2. उभभ्याम् ।

2.

3. उभभ्यम् ।

3.

4. उभाभ्यम् ।

4.

Correct Answer :-

• उभाभ्याम् ।

•

28) निर्गत्य इत्यत्र प्रत्ययः कः ?

1. अज् ।

1.

2. अक् ।

2.

3. अण् ।

3.

4. ल्यप् ।

4.

Correct Answer :-

• ल्यप् ।

29) महापुरुषः इत्यत्र विग्रहवाक्यं किम् ?

1. महाचासौ पुरुष च ।

2. महाचासौ पुरुशश्च ।

3. महांश्चासौ पुरुषश्च ।

4. महाचासौ पुरुषा च।

Correct Answer :-

• महांश्चासौ पुरुषश्च ।

30) असावयम् इत्यस्य सन्धिविच्छेदं कुरुत ।

1. असा + वयम् ।

2. असौ + वयम् ।

3. असाव + यम् ।

4. असौ + अयम् ।

Correct Answer :-

असौ + अयम् ।

Topic:- General English(L2GE)

1) Read the poem carefully and answer the question given below:

Destination so far away

Miles and miles to walk

Oh! What fantastic troubles

With no one can he share or talk

Miles and miles walks each man

A traveller in his own way

A traveller in his own life

He has to travel all day

However, occasionally a wise guide

Appears to this travelling man

While on his way he helps him find

The lord's will and divine plan

The man's journey is:

1. A solitary one
2. Not lonely at all
3. Comfortable and relaxed
4. A few miles long

Correct Answer :-

- A solitary one

2) Read the poem carefully and answer the question given below:

Destination so far away

Miles and miles to walk

Oh! What fantastic troubles

With no one can he share or talk

Miles and miles walks each man

A traveller in his own way

A traveller in his own life

He has to travel all day

However, occasionally a wise guide

Appears to this travelling man

While on his way he helps him find

The lord's will and divine plan

All man's _____ in his life.

1. a walker
2. a traveller
3. a tourist
4. an explorer

Correct Answer :-

- a traveller

3) Read the poem carefully and answer the question given below:

Destination so far away

Miles and miles to walk

Oh! What fantastic troubles

With no one can he share or talk

Miles and miles walks each man

A traveller in his own way

A traveller in his own life

He has to travel all day

However, occasionally a wise guide

Appears to this travelling man

While on his way he helps him find

The lord's will and divine plan

"Oh! What fantastic troubles" – this line_____.

1. shows that there are great challenges that man has to face in his lifetime
2. describes how the man is enjoying his troubles
3. shows that the troubles were easy for the man
4. describes how challenging the troubles are

Correct Answer :-

- describes how challenging the troubles are

4) Read the poem carefully and answer the question given below:

Destination so far away

Miles and miles to walk

Oh! What fantastic troubles

With no one can he share or talk

Miles and miles walks each man

A traveller in his own way

A traveller in his own life

He has to travel all day

However, occasionally a wise guide

Appears to this travelling man

While on his way he helps him find

The lord's will and divine plan

What is the main theme of the poem?

1. Travelling to new places
2. Friends
3. The journey of life
4. Walking

Correct Answer :-

- The journey of life

5) Read the passage carefully and answer the question given below:

Tamar first laid eyes on this beauty when he was 13. For some reason, he had never seen anything as beautiful as this. It was dressed in red with a little glisten from the coating of olive oil it had all over its body. It looked like wriggly snakes all piled up together, garmented with fresh, green basil and cherry tomatoes. It had sprinkling of something that looked like uneven clouds broken and sprayed on its surface. He didn't know what this was so he took a little bite into the white uneven clouds bits and he thought it tasted a lot like salty solid milk. It was scrumptious! He then saw chopped green, yellow and red capsicum chunks that were waxy on the outside but crunchy in texture, distributed unevenly over this beauty. It felt altogether glorious. He had just met spaghetti and fallen in love with it for life!

What did Tamar think was crunchy in texture?

1. Spaghetti
2. Olive oil
3. Cheese
4. Capsicum

Correct Answer :-

- Capsicum

6) Read the passage carefully and answer the question given below:

Tamar first laid eyes on this beauty when he was 13. For some reason, he had never seen anything as beautiful as this. It was dressed in red with a little glisten from the coating of olive oil it had all over its body. It looked like wriggly snakes all piled up together, garmented with fresh, green basil and cherry tomatoes. It had sprinkling of something that looked like uneven clouds broken and sprayed on its surface. He didn't know what this was so he took a little bite into the white uneven clouds bits and he thought it tasted a lot like salty solid milk. It was scrumptious! He then saw chopped green, yellow and red capsicum chunks that were waxy on the outside but crunchy in texture, distributed unevenly over this beauty. It felt altogether glorious. He had just met spaghetti and fallen in love with it for life!

What does this passage describe?

1. Beauty
2. Milk
3. Food
4. Clouds

Correct Answer :-

- Food

7) Read the passage carefully and answer the question given below:

Tamar first laid eyes on this beauty when he was 13. For some reason, he had never seen anything as beautiful as this. It was dressed in red with a little glisten from the coating of olive oil it had all over its body. It looked like wriggly snakes all piled up together, garmented with fresh, green basil and cherry tomatoes. It had sprinkling of something that looked like uneven clouds broken and sprayed on its surface. He didn't know what this was so he took a little bite into the white uneven clouds bits and he thought it tasted a lot like salty solid milk. It was scrumptious! He then saw chopped green, yellow and red capsicum chunks that were waxy on the outside but crunchy in texture, distributed unevenly over this beauty. It felt altogether glorious. He had just met spaghetti and fallen in love with it for life!

What does the word *scrumptious* mean in this passage?

1. Tasty
2. Cloud-like
3. Healthy
4. Glorious

Correct Answer :-

- Tasty

8) Read the passage carefully and answer the question given below:

Tamar first laid eyes on this beauty when he was 13. For some reason, he had never seen anything as beautiful as this. It was dressed in red with a little glisten from the coating of olive oil it had all over its body. It looked like wriggly snakes all piled up together, garmented with fresh, green basil and cherry tomatoes. It had sprinkling of something that looked like uneven clouds broken and sprayed on its surface. He didn't know what this was so he took a little bite into the white uneven clouds bits and he thought it tasted a lot like salty solid milk. It was scrumptious! He then saw chopped green, yellow and red capsicum chunks that were waxy on the outside but crunchy in

texture, distributed unevenly over this beauty. It felt altogether glorious. He had just met spaghetti and fallen in love with it for life!

In this passage, spaghetti is compared to:

1. Tomatoes
2. Basil
3. Worms
4. Snakes

Correct Answer :-

- Snakes

9) Fill in the blank with the correct option in the given sentence:

His involve- in the programme helped in making it a grand success.

1. -sively
2. -d
3. -ment
4. -ion

Correct Answer :-

- -ment

10) Fill in the blank with the correct option in the given sentence:

The scientist had to work very hard to _____ his invention.

1. refine
2. refinement
3. refinery
4. refined

Correct Answer :-

- refine

11) Fill in the blanks with the correct pronouns in the given sentence.

After school, _____ and _____ friend always meet up for _____ studies.

1. he, his, theirs
2. me, my, your
3. I, my, our
4. you, my, their

Correct Answer :-

- I, my, our

12) Which of the following options best combines the following sentences?

He was a good player. He was selected.

1. Being a good player, he was being selected.
2. He was a good player, but he was selected.
3. As he was a good player, he was selected.
4. He was selected and he was a good player.

Correct Answer :-

- As he was a good player, he was selected.

13) Choose appropriate articles for the given sentence:

Many foreign leaders came to _____ capital of _____ India to watch _____ Republic Day parade.

1. a, the, no article required
2. the, no article required, the
3. no article required, the, the
4. a, no article required, a

Correct Answer :-

- the, no article required, the

14) Choose the appropriate option that rewrites the given sentence in its passive voice.

I was given a lift by my colleague when I was late to college yesterday.

1. My colleague dropped me at college when I was late to college yesterday.
2. My colleague was given a lift by me when I went to college yesterday
3. The lift was given by my colleague to me yesterday while going to college.
4. When I was late to college yesterday, my colleague gave me a lift.

Correct Answer :-

- When I was late to college yesterday, my colleague gave me a lift.

15) Choose the appropriate synonym for the highlighted word in the given sentence.

This lugubrious work of art was set up in white marble after his death in St. Paul's cathedral, where it may still be seen.

1. humungous
2. joyful
3. animated
4. doleful

Correct Answer :-

- doleful

16) Choose the appropriate tenses to fill in the blanks in the given sentence:

_____ me. I _____ to concentrate.

1. Don't distracting, was trying
2. Don't distract, am trying
3. Don't distracted, tried
4. Distract not, try

Correct Answer :-

- Don't distract, am trying

17) Choose the appropriate antonym for the highlighted word in the given sentence.

The presence of her children should alleviate her sorrow.

1. Allocate

2. Accelerate

3. Assuage

4. Aggravate

Correct Answer :-

- Aggravate

18) Choose the appropriate conjunction for the given sentence.

A heavy storm was forecast _____ the weather was clear.

1. but

2. because

3. unless

4. and

Correct Answer :-

- but

19) Choose the appropriate prefix to fill in the blank in the given sentence.

A further fall in prices provided a great --incentive to investors.

1. ab--

2. ill--

3. im--

4. dis--

Correct Answer :-

- dis--

20) Choose the appropriate prepositions for the given sentence:

Several countries today are suffering _____ food shortage, and unfortunately some people have to do _____ it.

1. in, besides

2. against, without

3. of, on

4. from, without

Correct Answer :-

- from, without

21) Choose the option that best explains the highlighted expression:

She took the line of least resistance because it was a lost cause.

1. a thread with no tension
2. the course of action which is the easiest to take even though it is not the right thing to do
3. to surrender the object and gain admission into
4. to support whole heartedly without any second thoughts

Correct Answer :-

- the course of action which is the easiest to take even though it is not the right thing to do

22) Choose the option that best explains the highlighted expression:

He is a plain, simple and sincere man; he will always call a spade a spade.

1. help one and all
2. be outspoken
3. very diplomatic
4. very sensitive

Correct Answer :-

- be outspoken

23) Choose the option that best transforms the sentence into its Indirect form:

"Stand here and don't move," He said to her.

1. He said her to stand there and not to move.
2. He told her to stand here and not to move.
3. He told her to stand there and not to move.
4. He told her to stand there and do not move.

Correct Answer :-

- He told her to stand there and not to move.

24) Choose the option that substitutes the given phrase appropriately.

A person who eats human flesh

1. Jain
2. Carnivore
3. Vegan
4. Cannibal

Correct Answer :-

- Cannibal

25) Read the sentence carefully and choose the option that has an error in it:

The accountant stole thousands of dollar by juggling the company's books.

1. the company's books.
2. The accountant stole
3. by juggling
4. thousands of dollar

Correct Answer :-

- thousands of dollar

26) Change the given statement to indirect speech.

He said, "I have been working in a company for two years."

1. He said that he have been working in a company for two years.
2. He said that he had been working in a company for two years.
3. He said that he has been working in a company for two years.
4. He said that he was working in a company for two years.

Correct Answer :-

- He said that he had been working in a company for two years.

27) Choose the right tag:

The kids dance very well, _____?

1. do they
2. were they
3. aren't they
4. don't they

Correct Answer :-

- don't they

28) Fill in the blank with the most appropriate preposition in the given sentence.

We went for a run _____ the rain.

1. in
2. with
3. for
4. at

Correct Answer :-

- in

29) Choose an appropriate modal for the given sentence:

Priya spoke very well. She _____ have prepared in advance for her talk.

1. must
2. will
3. shall
4. can

Correct Answer :-

- must

30)

Choose the most appropriate determiner in the given sentence.

Would you like _____ cup of tea?

1. any
2. another
3. the
4. some

Correct Answer :-

- another

Topic:- Mathematics (MAT)

1) Which one of the following statements is true about integer? /

निम्नलिखित में से कौन-सा कथन पूर्णांक के संबंध में सत्य है?

1. On multiplying any integer with 0, we get 1. / 0 के साथ किसी भी पूर्णांक को गुणा करने पर, हमें 1 प्राप्त होता है।
2. On multiplying any integer with its multiplicative identity, we get 1. / किसी भी पूर्णांक को उसके गुणात्मक तत्समक के साथ गुणा करने पर, हमें 1 प्राप्त होता है।
3. For every integer, 0 is the additive inverse. / प्रत्येक पूर्णांक के लिए, 0 एक योगात्मक प्रतिलोम है
4. On dividing any integer except 0 by its additive inverse, we get -1. / 0 को छोड़कर किसी भी पूर्णांक को उसके योगात्मक प्रतिलोम से विभाजित करने पर, हमें -1 प्राप्त होता है।

Correct Answer :-

- On dividing any integer except 0 by its additive inverse, we get -1. / 0 को छोड़कर किसी भी पूर्णांक को उसके योगात्मक प्रतिलोम से विभाजित करने पर, हमें -1 प्राप्त होता है।

2) If an amount of Rs. 1368 is distributed amongst 24 persons, then what is the amount that each person gets? /

यदि 1368 रुपये की धनराशि 24 लोगों के बीच वितरित की जाती है, तो प्रत्येक व्यक्ति को कितनी राशि मिलती है?

1. Rs. 122 / 122 रुपए
2. Rs. 53 / 53 रुपए
3. Rs. 153 / 153 रुपए
4. Rs. 57 / 57 रुपए

Correct Answer :-

- Rs. 57 / 57 रुपए

3) A figure on a graph sheet covers 12 fully filled squares and 7 half filled squares. Find the total area. /

एक ग्राफ शीट पर एक आंकड़ा 12 वर्गों को पूरी तरह से भरता है और 7 वर्गों को आधा भरता है। कुल क्षेत्रफल ज्ञात करें।

1. $9\frac{1}{2}$ sq units / $9\frac{1}{2}$ वर्ग इकाई
2. $13\frac{1}{2}$ sq units / $13\frac{1}{2}$ वर्ग इकाई
3. $15\frac{1}{2}$ sq units / $15\frac{1}{2}$ वर्ग इकाई
4. 19 sq units / 19 वर्ग इकाई

Correct Answer :-

- $15\frac{1}{2}$ sq units / $15\frac{1}{2}$ वर्ग इकाई

4) A floor 4 m long and 3 m wide is covered with square tiles of colour blue, green and red. One-fourth of the floor is covered with blue tiles of side 10 cm. Another one-fourth of floor is covered with green tile of sides 15 cm. The remaining area is covered with red tile of sides 20 cm. Find the number of blue and red tiles used. /

4 मीटर लंबा और 3 मीटर चौड़ा एक फर्श नीले, हरे और लाल रंग के वर्गाकार टाइलों से ढका हुआ है। फर्श का एक चौथाई भाग 10 सेमी की भुजा वाले नीले टाइलों से ढका हुआ है। फर्श का एक अन्य चौथाई भाग 15 सेमी की भुजा वाले हरे रंग की टाइलों से ढका हुआ है। शेष क्षेत्र 20 सेमी भुजा वाले लाल टाइलों से ढका हुआ है। उपयोग किए गए नीले और लाल टाइलों की संख्या ज्ञात करें।

1. Blue = 300, red = 150 /
नीला = 300, लाल = 150
2. Blue = 300, red = 200 /
नीला = 300, लाल = 200
3. Blue = 150, red = 300 /
नीला = 150, लाल = 300
4. Blue = 150, red = 200 /
नीला = 150, लाल = 200

Correct Answer :-

- Blue = 300, red = 150 /

नीला = 300, लाल = 150

5) Ages of Rahul, Rohan & Ram are 10, 6 and 13 respectively. The sum of their ages will give Rajeev's age. Suma is 5 years older than Rajeev. What will be the age of Suma after 3 years? /

राहुल, रोहन और राम की आयु क्रमशः 10, 6 और 13 हैं। उनकी आयु का योग राजीव की आयु है। सुमा, राजीव से 5 वर्ष बड़ी है। 3 वर्षों बाद सुमा की आयु कितनी होगी?

1. 34
2. 30
3. 29
4. 37

Correct Answer :-

- 37

6) Another name for Formalism is _____ . /

प्ररूपवाद (फॉर्मलिस्म) के लिए अन्य नाम _____ है।

1. Abstractionism / अमूर्तचित्रण (ऐबस्ट्रैक्शनिज़म)
2. Deductivism / डिडक्टिविज़्म
3. Logicism / तर्कमूलकगणितवाद (लॉजिकिस्म)
4. Induction / इंडक्शन

Correct Answer :-

- Deductivism / डिडक्टिविज़्म

7) If the zeros of the polynomial $p(x) = x^2 + ax + b$ are -2 and -3 then a and b are: /

यदि बहुपद $p(x) = x^2 + ax + b$ का शून्यक -2 और -3 है, तो a एवं b हैं:

1. 5 & -6 / 5 एवं -6
2. 5 & 6 / 5 एवं 6
3. -5 & 6 / -5 एवं 6
4. -5 & -6 / -5 एवं -6

Correct Answer :-

- 5 & 6 / 5 एवं 6

8) Which of the following explains the commutative property?/

निम्नलिखित में से कौन-सा क्रमविनिमेय गुण की व्याख्या करता है?

1. $103 + (25 - 35) = (103 + 25) - 35$
2. $(a+b) = (b+a)$
3. $35 - 22 = (22 - 35)$
4. $a(b+c) = ab+ac$

Correct Answer :-

- $(a+b) = (b+a)$

9) Which one of the following statements is correct about number? /

निम्नलिखित में से कौन-सा कथन संख्या के संबंध में सत्य है?

1. Every number is a factor of one. / प्रत्येक संख्या एक का घटक होता है।
2. 2 is the only odd prime number. / 2 एकमात्र विषम अभाज्य संख्या है।
3. 2 is the smallest prime number. / 2 सबसे छोटी अभाज्य संख्या है।
4. One is a prime number. / 1 एक अभाज्य संख्या है।

Correct Answer :-

- 2 is the smallest prime number. / 2 सबसे छोटी अभाज्य संख्या है।

10) A frog falls into a well of 12 meter depth. It tries to jump out. Each times it jumps up it jumps as high as 3 meter but slides down 2 meter because of slippery wall of the well. In how many jumps will the frog reach out of the well? /

एक मेंढक 12 मीटर गहरे एक कुंआ में गिरता है। यह बाहर निकलने की कोशिश करता है। प्रत्येक बार जब यह कूदता है तो यह 3 मीटर ऊपर पहुँच जाता है लेकिन कुंआ के फिसलन वाली दीवार के कारण 2 मीटर नीचे फिसल जाता है। कुँएँ से बाहर निकलने के लिए मेंढक को कितनी बार कूदना पड़ेगा?

1. 12
2. 8
3. 6
4. 10

Correct Answer :-

11) In $\triangle LMN$ $\angle M=70^\circ$ and $LM=NM$. Then $\angle N=$ _____ /

$\triangle LMN$ में, $\angle M=70^\circ$ एवं $LM=NM$ है, तो $\angle N=$ _____

1. 60°
2. 55°
3. 50°
4. 70°

Correct Answer :-

- 55°

12) Which of the following is not the solution of the equation $y=\frac{7}{2}x+5$? /

निम्नलिखित में से कौन-सा समीकरण $y=\frac{7}{2}x+5$ का हल नहीं है?

1. (4,19)
2. (-6,-16)
3. (-12,-37)
4. (-8,23)

Correct Answer :-

- (-8,23)

13) If $\frac{x}{a} + \frac{y}{b} = 0$ and $ax - by = a^2 - b^2$, then x & $y = ?$ /

यदि $\frac{x}{a} + \frac{y}{b} = 0$ एवं $ax - by = a^2 - b^2$ है, तो x एवं $y = ?$

1. $x = \frac{a(a^2 + b^2)}{a^2 - b^2}, y = \frac{b(a^2 + b^2)}{a^2 - b^2}$

2. $x = \frac{a(a^2 - b^2)}{a^2 + b^2}, y = \frac{b(b^2 - a^2)}{a^2 + b^2}$

3. $x = a(a^2 + b^2), y = b(a^2 - b^2)$

4. $x = a, y = b$

Correct Answer :-

• $x = \frac{a(a^2 - b^2)}{a^2 + b^2}, y = \frac{b(b^2 - a^2)}{a^2 + b^2}$

14) If $x + \frac{1}{x} = 2$ then the value of $x - \frac{1}{x}$ is: /

यदि $x + \frac{1}{x} = 2$ है, तो $x - \frac{1}{x}$ का मान है:

1. 2

2. 0

3. -3

4. -1

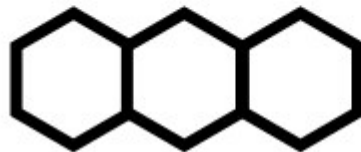
Correct Answer :-

• 0

15)

Find the number of line segments required to make a honey comb structure with 20 compartments arranged linearly? /

रैखिक रूप से व्यवस्थित 20 कोष्ठों वाली एक मधुकोश संरचना बनाने के लिए आवश्यक रेखाखंडों की संख्या ज्ञात करें?



1. 100

2. 105

3. 101

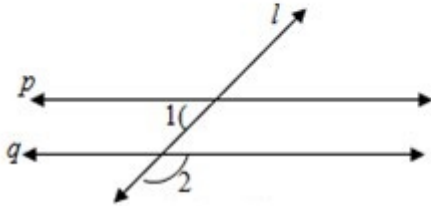
4. 120

Correct Answer :-

- 101

16) $p \parallel q$ and l be the transversal. $\angle 1 = 61^\circ$ then $\angle 2 = ?$

$p \parallel q$ तथा l एक तिर्यक रेखा है। $\angle 1 = 61^\circ$ है, तो $\angle 2 = ?$



1. 61°
2. 118°
3. 60°
4. 119°

Correct Answer :-

- 119°

17) In a parallelogram ABCD if $\angle CDB = 45^\circ$ and $\angle DAB = 65^\circ$, then $\angle CBD = ?$

एक समानांतर चतुर्भुज ABCD में, यदि $\angle CDB = 45^\circ$ और $\angle DAB = 65^\circ$ है, तो $\angle CBD = ?$

1. 60°
2. 45°
3. 65°
4. 70°

Correct Answer :-

- 70°

18) A number 'a' divides 1320 and 781 exactly. Given $a \neq 1$, then the number 'a' is not a factor of _____./
एक संख्या 'a' 1320 और 781 को पूर्णतः विभाजित करती है। $a \neq 1$ दिया गया है, तो संख्या 'a' _____ का घटक नहीं है।

1. 2101
2. Itself / स्वयं
3. 539
4. 125

Correct Answer :-

- 125

19) In a triangle ABC if $\angle CAB = 70^\circ$, and $AB = AC$ then $\angle B$ and $\angle C$ are /
एक त्रिभुज ABC में, यदि $\angle CAB = 70^\circ$ और $AB = AC$ है, तो $\angle B$ और $\angle C$ हैं:

1. $80^\circ, 80^\circ$
2. $55^\circ, 80^\circ$
3. $55^\circ, 55^\circ$
4. $20^\circ, 80^\circ$

Correct Answer :-

- $55^\circ, 55^\circ$

20) If $\frac{2x+6}{3-9x} = \frac{-2}{3}$ then $x =$ / यदि $\frac{2x+6}{3-9x} = \frac{-2}{3}$ है, तो $x =$

1. 2
2. 1
3. 3
4. 4

Correct Answer :-

- 2

21) Choose the number divisible by 9. /

9 से विभाजित होने वाली संख्या का चयन करें।

1. 9987123
2. 3425816
3. 6789548
4. 4536279

Correct Answer :-

- 4536279

22) Find the value of m, if one zero of the polynomial $(m^2 + 4)x^2 + 65x + 4m$ is the reciprocal of the other: /

यदि बहुपद $(m^2 + 4)x^2 + 65x + 4m$ का एक शून्यक अन्य का व्युत्क्रम है, तो m का मान ज्ञात करें:

1. $\sqrt{2}$
2. 3
3. 1
4. 2

Correct Answer :-

- 2

23) Find the value of m if (x-1) is a factor of $p(x) = x^3 + 6x^2 - 2x - 5m$. /

यदि $p(x) = x^3 + 6x^2 - 2x - 5m$ का घटक (x-1) है, तो m का मान ज्ञात करें।

1. -2
2. -1
3. 2
4. 1

Correct Answer :-

- 1

24) Find the whole numbers. / पूर्ण संख्या ज्ञात करें।

$$16 \times 8725 \times 625$$

1. 87,389,600
2. 87,250,000
3. 83,760,000
4. 87,110,000

Correct Answer :-

- 87,250,000

25) James is inside an aeroplane flying at a height of 7000 meter above the sea which is below sea level at a level. At a particular point, it is exactly above a submarine depth of $\frac{1}{6}$ th the height of plane. What is the vertical distance between James and the submarine? /

जेम्स एक हवाईजहाज के अंदर है जो समुद्र तल से 7000 मीटर की ऊंचाई पर उड़ रहा है। एक विशेष बिंदु पर, यह एक पनडुब्बी के ठीक ऊपर है जो हवाईजहाज के $\frac{1}{6}$ ऊंचाई जितना समुद्र तल के नीचे है। जेम्स एवं पनडुब्बी के मध्य ऊर्ध्वाधर दूरी कितनी है?

1. 8333.33 meter / 8333.33 मीटर
2. 9166.66 meter / 9166.66 मीटर
3. 9333.33 meter / 9333.33 मीटर
4. 8166.66 meter / 8166.66 मीटर

Correct Answer :-

- 8166.66 meter / 8166.66 मीटर

26) Anil is 6 years older than Akhil. Akhil is 36 months younger than Vijay. If Vijay's age is taken as y , then age of Anil is: /

अनिल आयु में अखिल से 6 वर्ष बड़ा है। अखिल आयु में विजय से 36 महीने छोटा है। यदि विजय की आयु y के रूप में ली जाती है, तो अनिल की आयु है:

1. $6(y-36)$
2. $6+(y-3)$
3. $6+(y-36)$
4. $(y+6)$

Correct Answer :-

- $6+(y-3)$

27) If $76x - 189y = -37$ & $-189x + 76y = -302$, then find the value of x and y . /

यदि $76x - 189y = -37$ एवं $-189x + 76y = -302$ है, तो x एवं y के मान ज्ञात करें।

1. $x = -2, y = -1$

2. $x = -2, y = 1$

3. $x = 2, y = 1$

4. $x = 2, y = -1$

Correct Answer :-

- $x = 2, y = 1$

28) 'Mahabhaskariya' an astronomical work completed in eighteenth century is written by: /

'महाभास्करीय' अठारहवीं शताब्दी में पूर्ण किया गया एक खगोलीय कार्य है जिसे _____ द्वारा लिखा गया है।

1. Aryabhata - II / आर्यभट्ट - II

2. Sridhara / श्रीधर

3. Bhaskar Acharya / भास्कर आचार्य

4. Ramanujan / रामानुजन

Correct Answer :-

- Bhaskar Acharya / भास्कर आचार्य

29) _____ are related to growing plants. /

_____ बढ़ते पौधों से संबंधित हैं।

1. Natural numbers / प्राकृतिक संख्याएं

2. Real numbers / वास्तविक संख्याएं

3. Fibonacci numbers / फिबोनैकी संख्याएं

4. Rational numbers / परिमेय संख्याएं

Correct Answer :-

- Fibonacci numbers / फिबोनैकी संख्याएं

30) The length and breadth of a cuboid is 12 cm and 9 cm respectively. If the total surface area of the cuboid is 678 cm^2 , then the height of the cuboid is: /

एक घनाभ की लंबाई और चौड़ाई क्रमशः 12 सेमी और 9 सेमी है। यदि घनाभ का कुल पृष्ठीय क्षेत्रफल 678 सेमी^2 है, तो घनाभ की ऊंचाई है:

1. 15 cm / 15 सेमी
2. 11 cm / 11 सेमी
3. 6 cm / 6 सेमी
4. 21 cm / 21 सेमी

Correct Answer :-

- 11 cm / 11 सेमी

31) The sequence of steps for mathematical modelling is:

- 1) Understand the problem.
- 2) Mathematical description and formulation.
- 3) Solving mathematical problem.
- 4) Interpreting the problem and validating.

/ गणितीय प्रतिरूपण (मॉडलिंग) के लिए चरणों का अनुक्रम है:

- 1) प्रश्न/समस्या को समझना।
- 2) गणितीय विवरण और सूत्रीकरण।
- 3) गणितीय प्रश्न/समस्या का समाधान करना।
- 4) प्रश्न/समस्या की व्याख्या करना और मान्य करना।

1. 3, 2, 1, 4
2. 1, 4, 3, 2
3. 2, 1, 3, 4
4. 1, 2, 3, 4

Correct Answer :-

- 1, 2, 3, 4

32) The main body of the lesson plan is based on the Herbartian principle of: /

पाठ योजना का मुख्य भाग _____ के हर्बर्ट सिद्धांत पर आधारित है।

1. Presentation / प्रस्तुति
2. Conclusion / निष्कर्ष
3. Introduction / परिचय

4. Association & Generalization / संधि और सामान्यीकरण

Correct Answer :-

- Association & Generalization / संधि और सामान्यीकरण

33) Simplify:- $39y^3(50y^2 - 98) \div 26y^2(5y + 7)$ /

सरल करें:- $39y^3(50y^2 - 98) \div 26y^2(5y + 7)$

1. $2y(5y-7)$
2. $3y(5y+7)$
3. $3y(5y - 7)$
4. $2y(5y + 7)$

Correct Answer :-

- $3y(5y - 7)$

34) Two triangles ABC and DEF are similar and the ratio of their areas is 25:9, then the ratio of their corresponding sides is _____ . /

दो त्रिभुज ABC एवं DEF समरूप हैं तथा इनके क्षेत्रफल का अनुपात 25:9 है, तो इनकी संगत भुजाओं का अनुपात _____ है।

1. 4:5
2. 5:3
3. 3:5
4. 5:4

Correct Answer :-

- 5:3

35) If mean and mode of a data are 11 and 8 respectively, then median = _____ . /

यदि एक आंकड़ा के माध्य और बहुलक क्रमशः 11 तथा 8 हैं, तो माधिका = _____ है।

1. 10
2. 11
3. 8

4. 12

Correct Answer :-

- 10

36) In a parallelogram ABCD, DC = 16 cm. If the altitude corresponding to the sides AB and AD are respectively 8 cm and 10 cm, then AD = ____./

एक समानांतर चतुर्भुज ABCD में, DC = 16 सेमी है। यदि संगत भुजाएँ AB तथा AD की ऊँचाई क्रमशः 8 सेमी तथा 10 सेमी है, तो AD = ____।

1. 16 cm / 16 सेमी
2. 12.5 cm / 12.5 सेमी
3. 12 cm / 12 सेमी
4. 12.8 cm / 12.8 सेमी

Correct Answer :-

- 12.8 cm / 12.8 सेमी

37) The mean of 25 observations is 36. If the mean of the first 13 observations is 32 and that of the last 13 observations is 39, the 13th observation is : /

25 प्रेक्षणों का माध्य 36 है। यदि पहले 13 प्रेक्षणों का माध्य 32 एवं अंतिम 13 प्रेक्षणों का माध्य 39 है, तो 13वाँ प्रेक्षण है:

1. 22
2. 25
3. 26
4. 23

Correct Answer :-

- 23

38) What is the ratio in which the join of A(-4,3) and B(2,-6) divided by the y-axis? /

वह अनुपात क्या है, जिसमें बिंदु A(-4,3) एवं B(2,-6) को मिलाने वाली रेखा y-अक्ष द्वारा विभाजित होती है?

1. 1:4
2. 2:1

3. 1:2

4. 4:1

Correct Answer :-

- 2:1

39) Construction of altars for the sacrifice, applying geometrical facts to perform duties by fixing east-west was assigned to the _____ . /

बलिदान के लिए वेदियों का निर्माण कार्य, पूर्व- पश्चिम को स्थिर करते हुए कर्तव्यों को पूरा करने के लिए ज्यामितीय तथ्यों को लागू करने का कार्य, _____ को सौंपा गया था।

1. Sulbhakars / सुल्बाकर
2. Aryabhatta / आर्यभट्ट
3. Bhaskara / भास्कर
4. Brahmagupta / ब्रह्मगुप्त

Correct Answer :-

- Sulbhakars / सुल्बाकर

40) Three cubes each of edge 4 cm are joined end to end horizontally, then the lateral surface area of the resulting cuboid is: /

4 सेमी किनारों वाले तीन घन का अंतिम बिंदु क्षैतिज रूप से जुड़े हुए हैं, तो परिणामी घनाभ का पार्श्व पृष्ठीय क्षेत्रफल है:

1. $120 \text{ cm}^2 / 120 \text{ सेमी}^2$
2. $150 \text{ cm}^2 / 150 \text{ सेमी}^2$
3. $128 \text{ cm}^2 / 128 \text{ सेमी}^2$
4. $95 \text{ cm}^2 / 95 \text{ सेमी}^2$

Correct Answer :-

- $128 \text{ cm}^2 / 128 \text{ सेमी}^2$

41) Which of the following is an example of a cubic polynomial? /

निम्नलिखित में से कौन-सा घन बहुपद का एक उदाहरण है?

1. x^5+x^3

2. x^2+x

3. x^3+x

4. x^4+x^3

Correct Answer :-

• x^3+x

42) _____ describes steps or a set of do's and don'ts to a method or strategy. / _____

एक विधि या रणनीति के चरणों या सेटों के करने एवं नहीं करने का वर्णन करता है।

1. Technique / तकनीक

2. Tactics / युक्ति

3. Method / विधि

4. Approach / उपागम

Correct Answer :-

• Technique / तकनीक

43) The respective positions of three friends A, B and C are (3, 2), (6, 5) and (9, 8) respectively. What does the three points joined together make? /

तीन दोस्तों A, B एवं C के संबंधित स्थान क्रमशः (3, 2), (6, 5) और (9, 8) हैं। तीनों बिन्दु एक साथ मिलकर क्या बनाती है?

1. An obtuse angled triangle / एक अधिकोण त्रिभुज

2. A line segment / एक रेखा खंड

3. An equilateral triangle / एक समबाहु त्रिभुज

4. A right angled triangle / एक समकोण त्रिभुज

Correct Answer :-

• A line segment / एक रेखा खंड

44) One among the below does not belong to creative behaviours and that action verb is _____. /

निम्न में से एक रचनात्मक व्यवहार से संबद्ध नहीं रखता है और वह क्रियात्मक क्रिया _____ है।

1. reconstruct / पुनःनिर्माण

2. design / रूपांकन

3. compare / तुलना

4. alter / परिवर्तन

Correct Answer :-

- compare / तुलना

45) The radius of a circle whose circumference is equal to the sum of the circumference of the two circles of diameters 36 cm and 20 cm is _____. /

एक वृत्त की त्रिज्या _____ है, जिसकी परिधि 36 सेमी तथा 20 सेमी व्यास वाले दो वृत्तों की परिधि के योग के बराबर है।

1. 56
2. 24
3. 28
4. 14

Correct Answer :-

- 28

46) The major aim of mathematics education is: /

गणित शिक्षा का प्रमुख उद्देश्य है:

1. Preparing for competitive exams / प्रतियोगी परीक्षाओं के लिए तैयारी करना
2. Mathematisation of the child's thought process / बच्चे की विचार प्रक्रिया का गणितीकरण
3. Solving problems / प्रश्नों को सुलझाना
4. Improving computational skills / संगणनात्मक कौशल में सुधार करना

Correct Answer :-

- Mathematisation of the child's thought process / बच्चे की विचार प्रक्रिया का गणितीकरण

47) 'Micro teaching is a scaled down teaching encounter in class size and class time' was stated by: /

'माइक्रो शिक्षण, कक्षा के आकार और कक्षा के समय में शिक्षण संघर्ष की न्यूनता है', इसे _____ के द्वारा कहा गया।

1. Piaget / पियाजे

2. D.W. Allen / डी.डब्ल्यू. एलेन
3. Gagne / गैने
4. Bruner / ब्रूनर

Correct Answer :-

- D.W. Allen / डी.डब्ल्यू. एलेन

48) Which of the following is considered as the most suitable approach in mathematics curriculum organization? /

निम्नलिखित में से किसे गणित पाठ्यक्रम व्यवस्था में सबसे उपयुक्त दृष्टिकोण माना जाता है?

1. Psychological / मनोवैज्ञानिक
2. Topical / सामयिक
3. Unitary / एकात्मक
4. Spiral / सर्पिल

Correct Answer :-

- Spiral / सर्पिल

49) Which of the following is related with Cognitive Domain? /

निम्नलिखित में से कौन संज्ञानात्मक क्षेत्र से संबंधित है?

1. Valuing / महत्व देना
2. Applying / लागू करना
3. Receiving / ग्रहण करना
4. Responding / प्रतिक्रिया देना

Correct Answer :-

- Applying / लागू करना

50) Which of the following aim of teaching mathematics help the individual to become self-reliant and independent? /

गणित पढ़ाने के निम्नलिखित उद्देश्यों में से कौन सा उद्देश्य, व्यक्ति को आत्मनिर्भर और स्वतंत्र बनने में मदद करता है?

1. Disciplinary / अनुशासनात्मक
2. Utilitarian / उपयोगी
3. Cultural / सांस्कृतिक
4. Social / सामाजिक

Correct Answer :-

- Disciplinary / अनुशासनात्मक

51) Item analysis is a quality assessment strategy to prepare_____ . /

मद विश्लेषण _____ तैयार करने के लिए एक गुणवत्ता मूल्यांकन रणनीति है।

1. Question bank / प्रश्न बैंक
2. Evaluation / मूल्यांकन
3. Examination / परीक्षा
4. Student performance / छात्र प्रदर्शन

Correct Answer :-

- Question bank / प्रश्न बैंक

52) CANCELLED

If the radius and height of a cylinder are in the ratio 5:7 and its volume is 550 cubic m, then its radius is _____ . /

यदि एक बेलन की त्रिज्या तथा ऊँचाई का अनुपात 5:7 हैं तथा इसका आयतन 550 घन मीटर है, तो इसकी त्रिज्या _____ है।

1. 6 cm / 6 सेमी
2. 7 cm / 7 सेमी
3. 5 cm / 5 सेमी
4. 4.5 cm / 4.5 सेमी

Correct Answer :-

- 5 cm / 5 सेमी

53) CANCELLED

Three-dimensional topology is a branch in mathematics which is more related with ____./

तीन आयामी सांस्थिति (टोपोलॉजी), गणित में एक शाखा है जो _____ से अधिक संबंधित है।

1. Biotechnology / जैव प्रौद्योगिकी
2. Economics / अर्थशास्त्र
3. Chemistry / रसायन विज्ञान
4. Physics / भौतिक विज्ञान

Correct Answer :-

- Physics / भौतिक विज्ञान

54) CANCELLED

The equation of line passing through (2,3) and parallel to x-axis is ____./

उस रेखा का समीकरण _____ है, जो (2,3) से होकर गुजरती है तथा x-अक्ष के समानांतर है।

1. $x = 2$
2. $x = -2$
3. $y = 3$
4. $y = -3$

Correct Answer :-

- $y = 3$

55) CANCELLED

If the sum and product of whose zeroes are 2 and $-\frac{3}{5}$, then the quadratic polynomial is ____./

यदि योग और उसके शून्यकों का गुणनफल 2 एवं $-\frac{3}{5}$ है, तो द्विघात बहुपद _____ है।

1. $5x^2 - 10x - 3$
2. $5x^2 + 10x + 3$
3. $5x^2 + 10x - 3$

4. $x^2 - 10x + 3$

Correct Answer :-

• $5x^2 - 10x - 3$

56) CANCELLED

The angle which is 24° less than its complement is: /

वह कोण जो अपने सम्पूरक से 24° कम है:

1. 57°

2. 47°

3. 33°

4. 24°

Correct Answer :-

• 33°

57) CANCELLED

Area of a quadrilateral ABCD is 35 cm^2 . The length of the perpendiculars on its diagonal BD from A and D are 3 cm and 4 cm respectively. Find the length BD. /

चतुर्भुज ABCD का क्षेत्रफल 35 सेमी^2 है। A और D से इसके विकर्ण BD पर लंब की लंबाई क्रमशः 3 सेमी और 4 सेमी है। BD की लंबाई ज्ञात करें।

1. 10 cm / 10 सेमी

2. 15 cm / 15 सेमी

3. 25 cm / 25 सेमी

4. 12 cm / 12 सेमी

Correct Answer :-

• 10 cm / 10 सेमी

58) Express 486 as a product of powers of prime factors. /

486 को अभाज्य गुणकों के घात के गुणनफल के रूप में व्यक्त करें।

1. 3^5
2. $1^2 \times 5^3$
3. $2^1 \times 3^5$
4. $5^3 \times 2$

Correct Answer :-

- $2^1 \times 3^5$

59) Jeevan fills a wall in his room with the photos he took. The size of a photo is 21 cm by 18 cm. If he uses 6 photos, then what is the area of the wall? /

जीवन ने अपने कमरे की एक दीवार को स्वयं द्वारा ली गई तस्वीरों से भर दिया। एक तस्वीर का आकार 21 सेमी × 18 सेमी है। यदि वह 6 तस्वीरों का उपयोग करता है, तो दीवार का क्षेत्रफल कितना है?

1. 2068 sq cm / 2068 वर्गसेमी
2. 2268 sq cm / 2268 वर्गसेमी
3. 378 sq cm / 378 वर्ग सेमी
4. 2334 sq cm / 2334 वर्गसेमी

Correct Answer :-

- 2268 sq cm / 2268 वर्गसेमी

60) If $x^2 - 3x + 2$ is a factor of $x^4 - px^2 + q$, then find the value of p and q /

यदि $x^4 - px^2 + q$ का घटक $x^2 - 3x + 2$ है, तो p और q का मान ज्ञात करें।

1. $p = 5, q = 4$
2. $p = 4, q = 3$
3. $p = 2, q = 1$
4. $p = 3, q = 2$

Correct Answer :-

- $p = 5, q = 4$